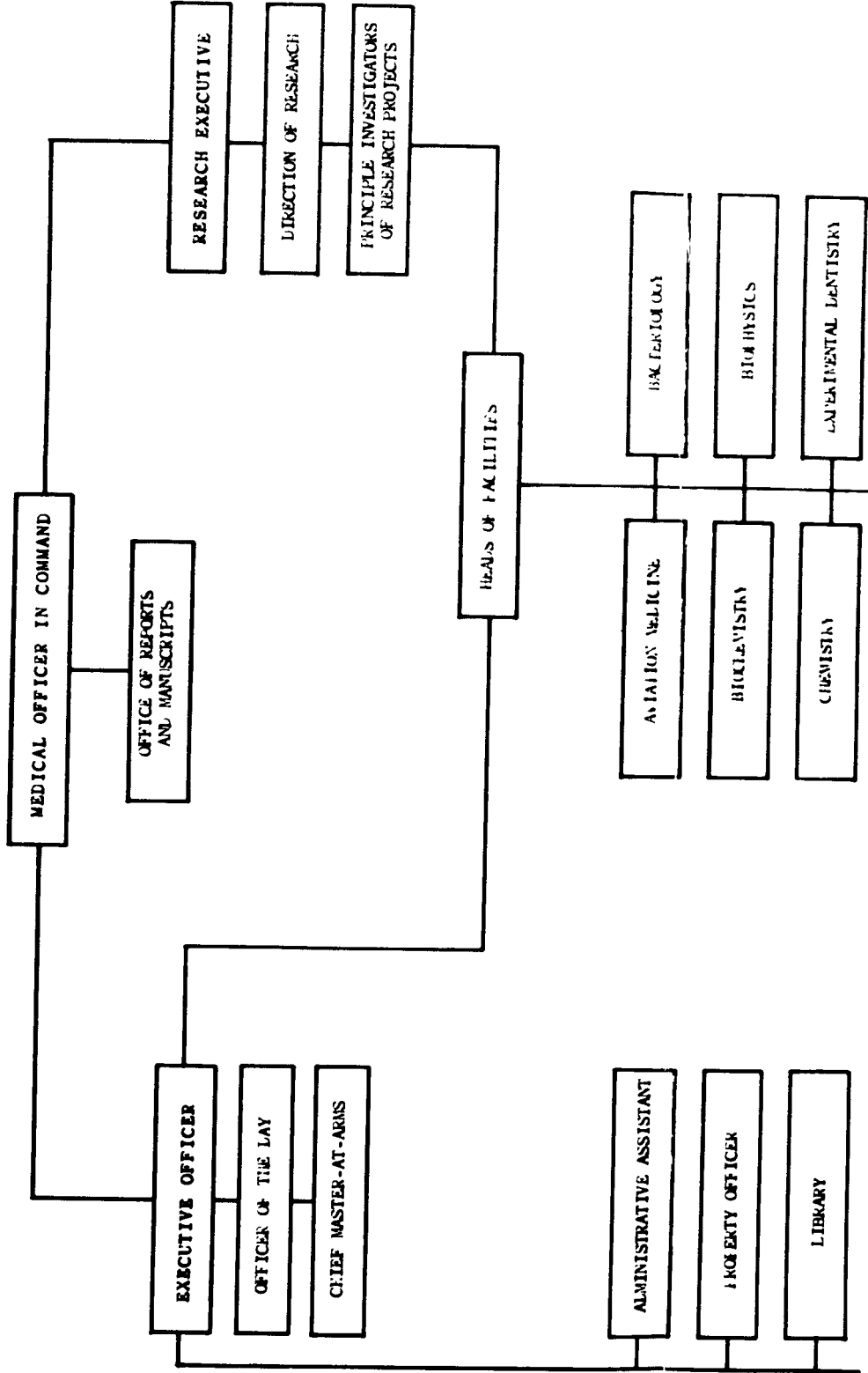
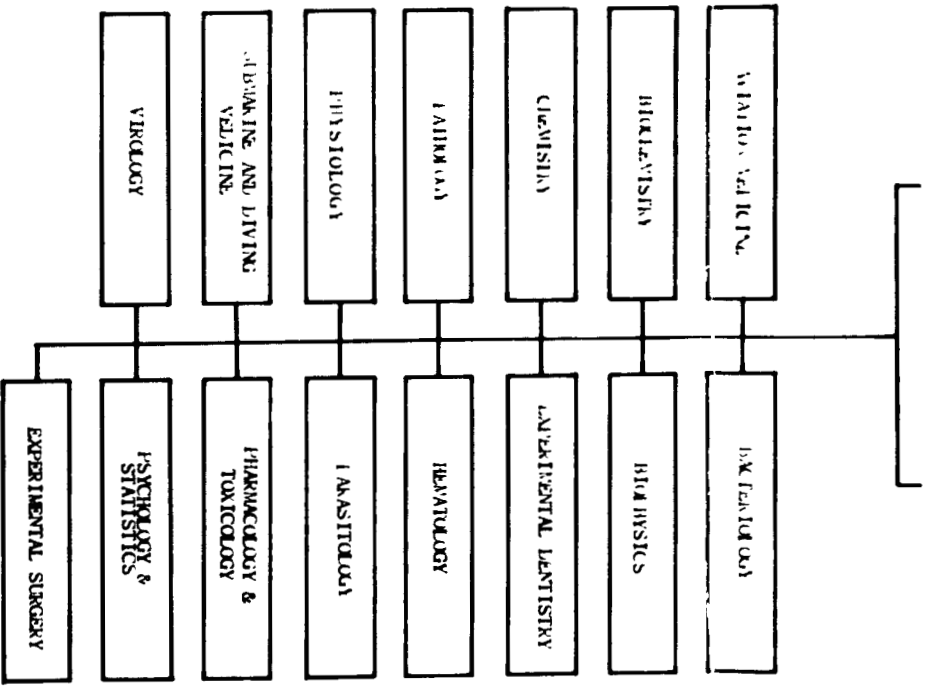
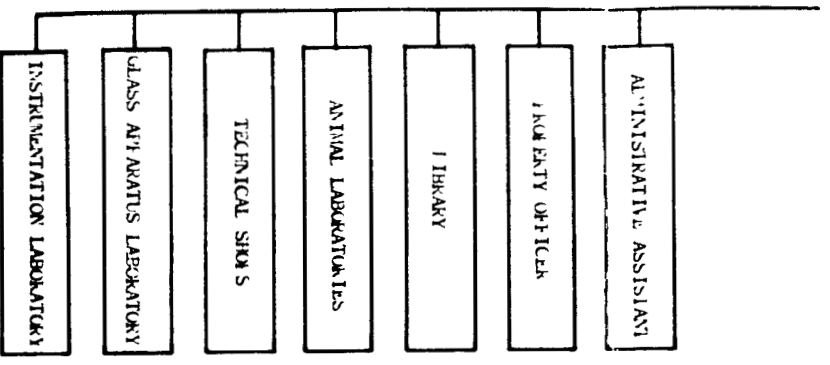


NAVAL MEDICAL RESEARCH INSTITUTE ORGANIZATION CHART





DESCRIPTION OF OFFICES AND STAFFED ON
 NAVAL MEDICAL RESEARCH INSTITUTE
 ORGANIZATION CHART

MEDICAL OFFICER IN COMMAND
 Responsible for carrying out
 the mission of the Institute
 and its administration.

EXECUTIVE OFFICER
 General supervision
 of the details in con-
 nection with maintenance
 and operation.

OFFICER OF THE DAY
 1. Responsible for compliance with
 orders, and maintenance of good
 order and discipline.
 2. Responsible for complete record
 of events during tour of duty.

CHIEF MASTER-AT-ARMS
 1. Maintenance of discipline
 and compliance with rules
 and regulations pertaining to
 personnel, security, order
 and cleanliness.

ADMINISTRATIVE ASSISTANT
 1. Correspondence, records, and files,
 2. Liaison with the NMIC Personnel Office
 and Office of Industrial Relations.
 3. Security Officer.

PROPERTY OFFICER
 1. Procures supplies and equipment
 through NMIC Procurement Office

OFFICE OF REPORTS
 AND MANUSCRIPTS

1. Editing of manuscripts.
2. Insuring conformance
 with prescribed format.
3. Preparation of lithomat plates
 and illustrations.
4. Distribution of reports in
 accordance with directions
 of Medical Officer in Command.

HEADS OF FACILITIES

1. Responsible for the proper
 care and maintenance of
 laboratories and scientific
 equipment assigned to his
 facility.
2. Responsible for procuring
 the necessary supplies
 and equipment for other
 members of the facility.

AVIATION MEDICINE

Research in high altitude aero-
 physiology, aircraft crash
 injuries, and other phases of
 aviation medicine.

BIOCHEMISTRY

Research in biochemistry,
 nutrition, and allied subjects.

RESEARCH EXECUTIVE

1. Responsible for the
 proper progress of
 research projects.
2. Assures proper utilization
 of scientific personnel
 and equipment.
3. Assigns principal investi-
 gators and collaborators
 to research projects.

DIRECTION OF RESEARCH

PRINCIPAL INVESTIGATORS
 OF RESEARCH PROJECTS

1. Responsible for proper
 progress of his research project.
2. Responsible for the
 scientific integrity of the
 work performed by him and
 his collaborators.
3. Responsible for preparation
 of final reports.

BACTERIOLOGY

Research in bacteriology.

BIOPHYSICS

Research in medical aspects of
 atomic energy, physiological effects

PROPERTY OFFICER
 1. Procures supplies and equipment through MMIC Finance Office.
 2. Responsible for maintenance of Institute buildings and equipment.
 3. Security Officer.

LIBRARY
 1. Procures and files commonly used reference books and journals for staff members.
 2. Carries out bibliographical and reference work upon request.
 3. Borrows books and journals for staff members from other libraries.

ANIMAL LABORATORIES
 Furnishes experimental animals needed by investigators.

TECHNICAL SHOPS
 Designs and fabricates special scientific equipment.

GLASS APPARATUS LABORATORY
 Designs and fabricates special glass apparatus and repairs glass apparatus.

INSTRUMENTATION LABORATORY
 Designs, fabricates, and repairs electrical and electronic scientific apparatus.

AVIATION MEDICINE
 Research in high altitude aerophysiology, aircraft crash injuries, and other phases of aviation medicine.

BIOCHEMISTRY
 Research in biochemistry, nutrition, and allied subjects.

CHEMISTRY
 Carries out chemical research and furnishes assistance to investigators requiring the collaboration of chemists in their research projects.

PATHOLOGY
 Research in pathology. Furnishes pathology consultation to other investigators.

PHYSIOLOGY
 Research in all phases of physiology.

SUBMARINE AND DIVING MEDICINE
 Research in high pressure, aerophysiology, and other problems related to submarine medicine.

VIROLOGY
 Study of viruses and rickettsia.

and equipment for other members of the facility.

BACTERIOLOGY
 Research in bacteriology.

BIOPHYSICS
 Research in medical aspects of atomic energy, physiological effects of ultrasonic and other vibrations, and other phases of biophysics.

EXPERIMENTAL DENTISTRY
 Research in all phases of experimental dentistry.

HEMATOLOGY
 Research in hematology and furnishes consultation to other investigators.

PARASITOLOGY
 Research in malariaology, helminthology, and entomology.

PHARMACOLOGY & TOXICOLOGY
 Research in pharmacology and therapeutics. Furnishes consultation to other investigators.

PSYCHOLOGY AND STATISTICS
 1. Research in psychology and neuropsychology.
 2. Statistical examination of manuscripts and data of other investigators.

EXPERIMENTAL SURGERY
 Research in experimental surgery.